

TIFFEN® Black Pro-Mist® and Warm Black Pro-Mist®

The BLACK PRO-MIST filter offers all of the benefits of the Pro-Mist filter in a more subtle form. This filter is excellent for toning down excessive sharpness and reducing contrast by moderately lightening shadow areas. This is especially useful given the contrast and extremely sharp resolution produced by contemporary films and lenses. Pro-Mist filters also yield moderate highlight flare that appears to stay close to the light source like a halo, creating an almost pearlescent glow around the highlights. The BLACK PRO-MIST creates a definely visible, light "pasteling" effect. The effect is subtle and delicate, with contained highlight flare, less lightening of shadows and moderate reduction of contrast.

The WARM BLACK PRO-MIST filter offers the dramatic benefits of the Black Pro-Mist and the exclusive Tiffen 812® filter for warming skintones, as well as exterior shade and highlight areas. The warming feature also can reduce bluish reflections from dark skintones.

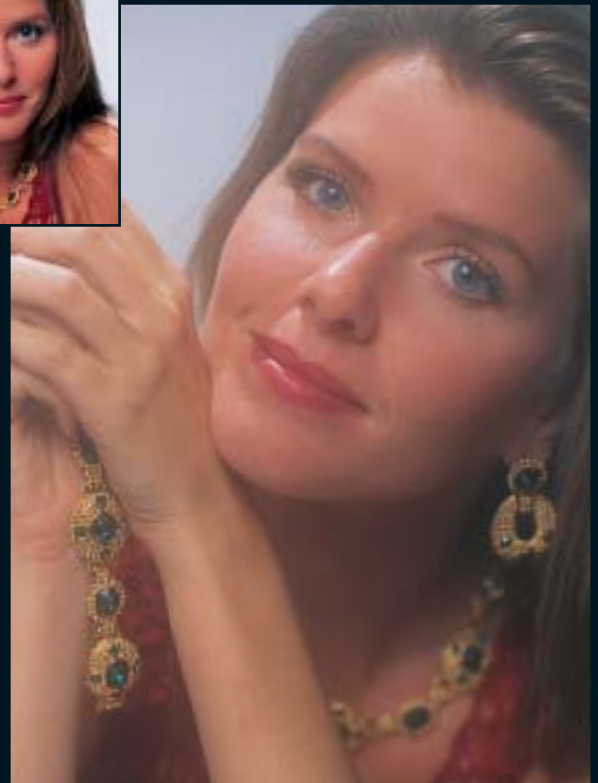
The WARM BLACK PRO-MIST is the right choice when you want to convey a warm, romantic feeling. It is also very useful in outdoor open shade where there is excessive blue and control over light may not be possible. The WARM BLACK PRO-MIST helps eliminate the blue cast for a more pleasing effect.

Available in all professional sizes in densities 1/8, 1/4, 1/2, 1, 2, 3, 4 & 5.

*The higher the density, the greater effect of diffusion.
The warm color remains constant in all densities
while the amount of softening varies.*



No Filter



Black Pro-Mist 3

© Franz Edson



No Filter



Warm Black Pro-Mist 4

© Kiersten A. Stein

TIFFEN®

*Helping Create the
World's Greatest Images*

90 Oser Avenue, Hauppauge, New York 11788
(516)273-2500 • FAX: (516)273-2557 • 1-800-645-2522

Tiffen Technical Center

3500 West Olive Avenue, Suite 810, Burbank, CA 91505
(818)843-4600 • FAX: (818)843-8321 • 1-800-593-3331