

TIFFEN® Soft/FX® & Warm Soft/FX® Filters

Many different techniques have been developed for diffusing or softening images. The Soft/FX filter alone provides a much sought after effect: retains overall image clarity while it softens unwanted details.

The SOFT/FX series has a pattern of tiny lenslets designed specifically to put fine image elements, like wrinkles and skin blemishes, out of focus while leaving larger details such as the eyes, sharp. The proportion of clear space to the diffused pattern on the glass determines the strength of the filter and enables the overall image quality and sharpness to be retained. The lighter densities are very subtle, producing no flare from highlights or reduction in contrast. The higher densities tend to be more noticeable in their effect while still providing a pleasing portrait.

The WARM SOFT/FX combines the innovative diffusion technology of the Soft/FX filters with the exclusive Tiffen 812® warming filter, balancing contrasting skintones to make people look their best.

Ideal for all types of people photography, the Warm Soft/FX can be helpful when a scene involves several people with varying skintones. The Warm Soft/FX is particularly useful with video due to its sensitivity to blue. It provides the dual benefit of softening and warming, while offering the convenience of minimized filter requirements by allowing the use of two filter effects in one position of the filter wheel in professional broadcast video cameras.

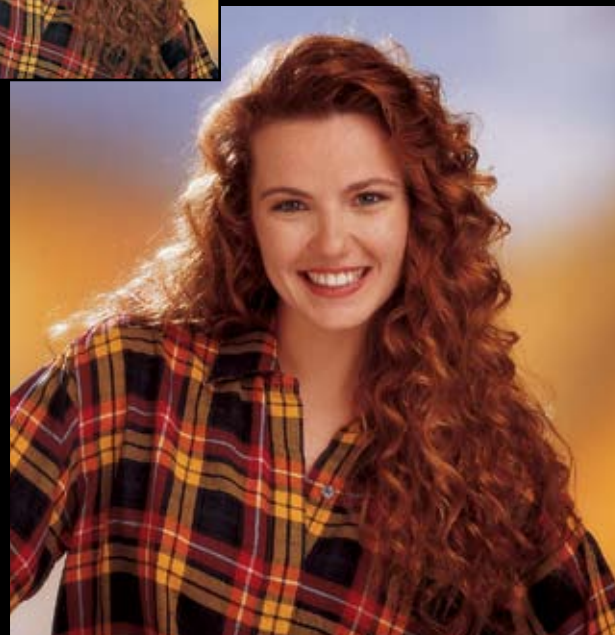
Neutral colors show little change while cool- and skin-tones are made warmer as well as being softened for a beautiful effect—unmatched anywhere.

Available in all professional sizes in densities 1/2, 1, 2, 3, 4 & 5.

The higher the density, the greater effect of diffusion. The warm color remains constant in all densities while the amount of softening varies.



No Filter



Warm Soft/FX 3

© Jan Cobb



No Filter



Soft/FX 3

© photographer



90 Oser Avenue, Hauppauge, New York 11788
(631) 273-2500 • FAX: (631) 273-2557 • 1-800-645-2522
techsupport@tiffen.com • www.tiffen.com

Tiffen Technical Center
6933 San Fernando Road, Glendale, CA 91201
(818) 843-4600 • FAX: (818) 843-8321